



— ROBERT —  
**BIALE**  
— VINEYARDS —



## LETTER FROM BOB

For over 50 years a dirt-encrusted leather jacket hung on a nail in my Nonna Cristina's basement. I asked my dad Aldo about it one day when I wanted to play with it and he said, "That's your Nonno Pete's. That's where he left it so that's where it belongs." As simple as my dad's answer was, it satisfied me.

The farmers we work with now who are entrusted with safeguarding vineyards that were planted by past generations cultivate this same appreciation of preserving a classic leather jacket. To them it's not a burden to work with and maintain life in these vines, in fact, many see it as their duty and honor. The result, of course, is the satisfaction of pouring world-class wines from these restored, treasured vineyards.

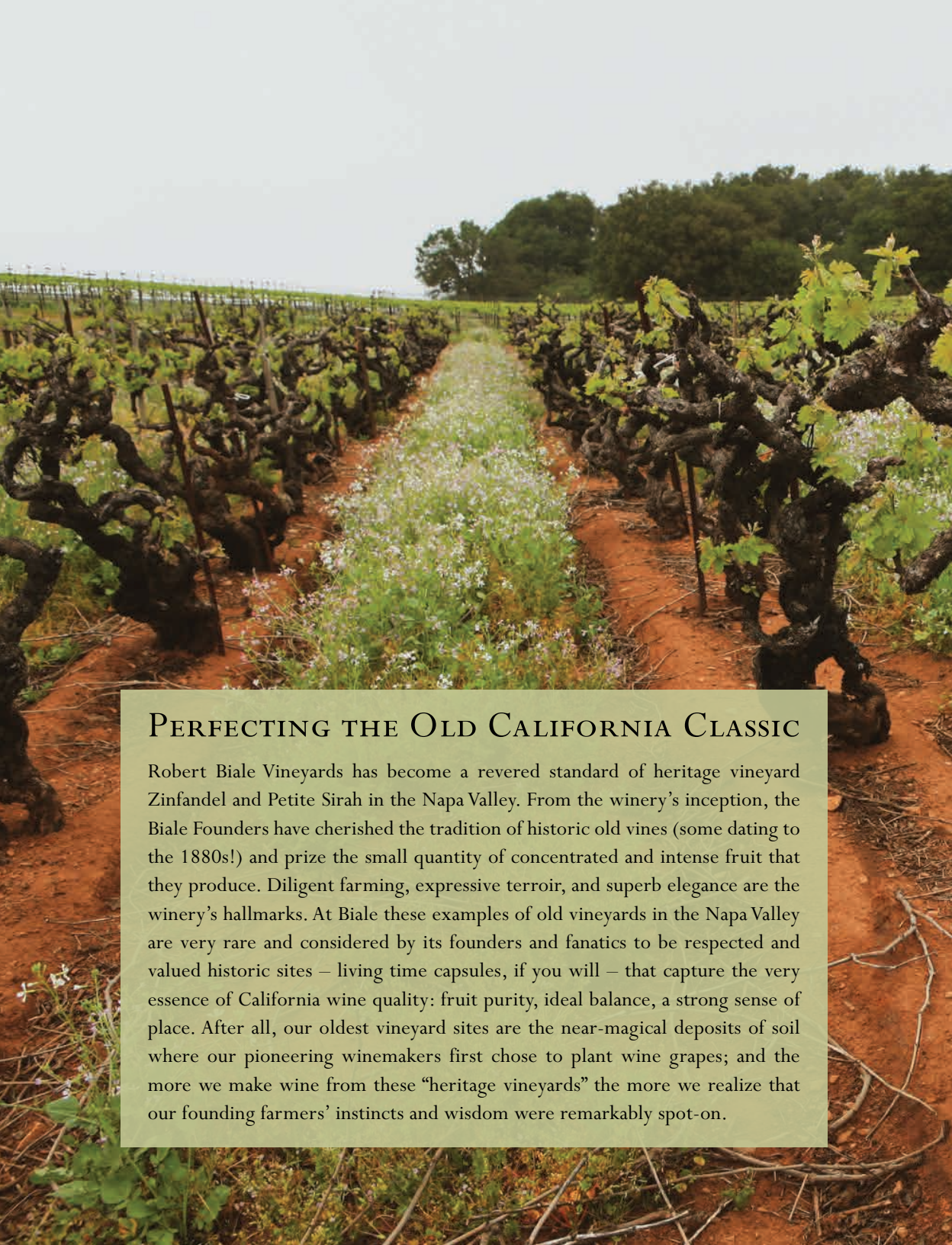
When it came time to remodel Nonna's basement, I asked Aldo if I could have Nonno's jacket. He said, "Sure, just be careful with it."

*Bob Biale*

*"From our beginnings as a winery dedicated to advancing Zinfandel, we have always considered ourselves part farmers, part winemakers, part historic preservation society."*

— Biale Founders



A photograph of a vineyard with rows of old, gnarled grapevines and a central path of white flowers. The vines are dark and twisted, with green leaves starting to grow. The ground is reddish-brown soil. In the background, there are more rows of vines and a line of trees under a clear sky.

## PERFECTING THE OLD CALIFORNIA CLASSIC

Robert Biale Vineyards has become a revered standard of heritage vineyard Zinfandel and Petite Sirah in the Napa Valley. From the winery's inception, the Biale Founders have cherished the tradition of historic old vines (some dating to the 1880s!) and prize the small quantity of concentrated and intense fruit that they produce. Diligent farming, expressive terroir, and superb elegance are the winery's hallmarks. At Biale these examples of old vineyards in the Napa Valley are very rare and considered by its founders and fanatics to be respected and valued historic sites – living time capsules, if you will – that capture the very essence of California wine quality: fruit purity, ideal balance, a strong sense of place. After all, our oldest vineyard sites are the near-magical deposits of soil where our pioneering winemakers first chose to plant wine grapes; and the more we make wine from these “heritage vineyards” the more we realize that our founding farmers’ instincts and wisdom were remarkably spot-on.





# THE STORY OF BLACK CHICKEN

In the Napa Valley, the period following the repeal of Prohibition was relatively quiet. The hundreds of wineries that had dwindled to only a few, rose back to over a dozen by about 1960. This was an era of the family grape grower. Dozens of families north to south raised grapes as a crop to be sold to the valley's wineries. Most commonly the red varieties were Zinfandel and Petite Sirah—the adopted “workhorse” grapes of California. In the town of Napa during this era of the family farmer, the mother/son team of Cristina and Aldo Biale grew not only Zinfandel, but the classic Italian immigrant farming trifecta of prunes, walnuts, and white leghorn chickens. After Aldo lost his father in 1942, he realized that he could earn more for grapes in their fermented state, and he discreetly began putting up extra barrels of Zinfandel in his barn. The enterprising Aldo became popular among Napans with a yen for Zin and fresh eggs. He delivered jugs of his bootleg Zinfandel on Fridays - in a blue 1940 Studebaker. However, a situation developed that required a certain level of discretion. How to order Aldo's illicit wine by phone without tipping off nosy neighbors or authorities? They might be listening in on the Biale's home phone service - the party line! Aldo hatched a solution: the code name for his bootleg Zinfandel became “Black Chicken”. This party line-based phone ordering system lasted for decades. For a while, so as not to complicate things for Aldo's Italian bride, Clementina, she didn't even know what callers meant by a “black chicken”. “We only have the white ones,” she would tell customers in her newly-learned English. Today, Robert Biale Vineyards continues the tradition by producing a Black Chicken Zinfandel – our winery's flagship wine.



# SUSTAINABILITY & FARMING PRACTICES

## **BIALE RECEIVES NAPA GREEN WINERY CERTIFICATION!**

We are proud and honored to receive this hard-earned certification for our commitment to sustainable practices in both farming and winemaking. We feel it is the responsible thing to do and is beneficial to our environment, our community, our employees, our business...and our wines! In a valley-wide effort to protect the Napa River ecosystem and its native fish populations, Robert Biale Vineyards employs farming practices that are designed to conserve soil and river water levels. We have joined other Napa Valley grape growers and farmers in completing the Napa Green Certification and Fish Friendly Farming Initiative. For more information visit: <https://napagreen.org/>

## **SOLAR PANELS INSTALLED AT ROBERT BIALE VINEYARDS**

In 2020 we installed a new solar panel system on the roof of our winery and crush pad. Installing this solar power system aligns with Robert Biale Vineyards' commitment to sustainability strategies and practices. This state-of-the-art solar array will empower us to reduce our utility costs, in keeping with our commitment to environmentally sound practices. We hope that our visitors will gain an appreciation of our sustainability initiatives and how we're working to ensure a clean energy future.

## **DRY FARMING**

Robert Biale Vineyards has a successful, sustainable dry farming program that reduces water consumption and minimizes the environmental impact associated with irrigation. The farming begins with careful soil preparation and focuses on soil structure and organic matter content to enhance its water-holding capacity. It also contributes to the unique terroir of the wine, as the vines must adapt to the specific conditions of the vineyard site.

## **OLD VINE PRESERVATION**

Robert Biale Vineyards strives to keep vineyards healthy and productive for generations to come, eliminating the resource-heavy process of replanting a vineyard after only a few years. Farming practices such as composting, cover cropping, natural pest control (installation of bird boxes, encouragement of predatory insects), and mechanical—rather than chemical—weed control, help ensure the longevity of the vineyards we hold so dear.





# ROBERT BIALE VINEYARDS TIMELINE – 1918 TO PRESENT

1918 Pietro Biale emigrates to California



1921 Cristina Penna emigrates to California

1928 Pietro & Cristina marry and settle as caretakers at Mt. Veeder's Gier Ranch



1929 Aldo Biale born

1937 Pietro and Cristina purchase land "north" of the town of Napa

1942 Pietro dies in an explosion while working at a rock quarry in Napa  
Aldo, 13, takes on family farm



1943 Aldo & Cristina bottle and sell first version of "Gallina Nera"  
also known as Black Chicken Zinfandel

1953 Aldo travels to Italy with Cristina, meets, courts,  
and marries Clementina Calvi — oldest of nine children



1957 Son, Robert, born  
Number of operating Napa Valley Wineries: 19



1962 Cristina Biale trades a 15-acre prune orchard for an existing,  
beautiful vineyard from a neighbor, destined to be bottled as Aldo's Vineyard



1972 Bob and Dave Pramuk graduate from St. Apollinaris grammar school, near Biale family ranch

1976 The Biale family continues to sell grapes to the St. Helena Cooperative  
while growing prunes and walnuts and raising chickens  
Aldo employed by Napa City Water Department



1989 Bob begins working at Beringer Vineyards, meets Al Perry—future Biale winemaker

1991 Aldo and Bob establish partnership with Perry and Pramuk to  
form Robert Biale Vineyards and harvest first vintage of Aldo's  
Vineyard Zinfandel, crushed at the Streblov Vineyards winery



1992 Biale operations move to Moss Creek Winery

1993 Aldo's Vineyard release: 415 cases  
Gaudi-Carli Barbera, Falleri, Dyer's Farm Refosco,  
and Zinfandel harvested from hidden old Napa vines



1995 Monte Rosso, Old Crane, Valsecchi Vineyards added  
First "Old Vines" Petite Sirah and Nonna's Vineyard Sangiovese harvested

1996 Aldo's Vineyard makes Wine Spectator's Top 100 list  
at #48 with the 1994 Vintage



1999 First harvest of "legal" Black Chicken  
Stagecoach Zinfandel planted  
Nonna Cristina passes away at 103  
Bob leaves Beringer to work full time at Biale, Perry leaves Mondavi  
Spencer Vineyard added



2000 Biale operations move to Hendry Ranch from Moss Creek  
First harvest of Royal Punishers Petite Sirah



2001 Purchase of 10.84 acres on Big Ranch Road, Napa  
Thomann Station Petite Sirah added

2002 Grande Vineyard added  
Spencer Vineyard judged #4 and top American Wine at the  
Grand Jury European tasting in Las Vegas  
Hill Climber Syrah series debuts

2004 Construction of winery begins  
Last vintage at Hendry, first Stagecoach harvest

2005 Move to new winery  
Number of operating Napa Valley wineries: 391



2006 Old Kraft, Varozza, and Kiger Vineyards added  
First bottling of Sauvignon Blanc—Pollo Bianco

2008 Steve Hall named Winemaker

2009 R.W. Moore, Palisades PS, and Rocky Ridge added  
Aldo Biale passes  
30 Bluebird boxes added



2011 Winery releases Bravo Aldo magnums that Aldo  
vinified with original Black Chicken equipment

2012 Smithsonian Exhibit opens with two original winemaking pieces from Aldo Biale  
Bedrock and Pagani added

2013 Tres Goetting named Winemaker  
Limerick Lane added

2014 Greco vines planted at Biale winery

2015 25th Harvest Anniversary



2016 Clementina Greco harvested from winery vineyard

2017 Beatty Ranch added  
Joffe Vineyard in Carneros planted  
Clementina Biale passes

2018 David Natali named Assistant Winemaker



2019 New Owl Box and Raptor Perches added

2020 30th Harvest Anniversary  
Expanded Tasting Patio  
Morisoli Vineyard added  
Solar Panels added



2021 David Natali named Winemaker

2022 Dickerson Ranch added

2023 Bee Colony added



*Preserving the Legacies of Zinfandel & Petite Sirah*

*Stagecoach Vineyard*®





*Palisades Vineyard*



## PARTY LINE ZINFANDEL

Party Line celebrates the tradition of Zinfandel when California's wine-growing families and shared phones called 'party lines' were common in rural areas. In old Napa, a teenaged egg-and-produce farmer named Aldo Biale employed the code name 'Black Chicken' on the party line phone to keep his bootleg jugs of home-grown and homemade Zinfandel a secret from meddling neighbors and authorities. Vibrant and versatile, Robert Biale Vineyards' Party Line is a fully legal classic Zinfandel from vineyards throughout California.

## BLACK CHICKEN ZINFANDEL, NAPA VALLEY

Serious Zinfandel with a Napa Valley folk story! Today, Robert Biale Vineyards continues the tradition by producing Black Chicken Zinfandel—although this version from our vineyards in Napa is completely legal. The first fully legal Black Chicken was made in 1999 from the same family vineyard in Napa's cool Oak Knoll District. Today, the wine continues to be centered around the estate vineyard of the winery's Oak Knoll District location along with a composition of selections from neighboring vineyards in Napa Valley. It has become a true Zinfandel classic and a benchmark for the Zinfandel category, and perhaps the most famous icon of Napa Valley Zinfandel.

Showing the influence of the breezy and fog-laced Oak Knoll District, this wine offers rich, plush fruit, delicate acidity, and a structure defined by well-ripened tannins. Layered notes of black cherry, raspberry, sandalwood, bergamot, cloves, blueberry, and balsam on the nose. Delicate, yet rich with plum compote, violets, and baking spice on the palate.





## ROYAL PUNISHERS, PETITE SIRAH, NAPA VALLEY

Petite Sirah was the most commonly planted grape in Napa Valley for nearly a century, and now we are witnessing a resurgence and new appreciation for this historic hero variety! Known for its dark color, firm structure, and deep blue and black fruit flavors, it is perfectly suited to Napa Valley's moderate and dry growing season. Petite Sirah was also a favorite grape among winemakers looking to pump up underpowered wines in need of deep fruit, color, and structure. Its natural versatility made it a great blending component to all red varieties including Zinfandel and Cabernet Sauvignon. Royal Punishers is an anagram of the two parent grapes viticulturist François Durif cross pollinated in the 1860s: Syrah and Peloursin.

## CLEMENTINA, GRECO BIANCO, OAK KNOLL DISTRICT, NAPA VALLEY

In Italy, it is believed that Greco has its origins in ancient Greece. However, it is identified as one of the great white grapes of Tufo, Campania, in Southern Italy. Complex, lean, and graceful, Greco wines are traditionally known to cellar extremely well up to 10 years. The alluvial soils and moderate climate of the Oak Knoll District are ideal conditions for a wide variety of vinifera grapes. Greco is a new entry in the district that shows wonderful promise for future winemaking. This wine is a tribute to Clementina Biale (1929-2017), wife of Aldo Biale and matriarch of the Biale Family.





## **R.W. MOORE VINEYARD, COOMBSVILLE, NAPA VALLEY**

The Moore Vineyard lies smack dab in the middle of the Coombsville district on Hagen Road—adjacent to Sarcos Creek with a looming Mt. George to the east. Over 150 years, the property passed through a colorful succession of old Napa families. Italian immigrant grocer Felix Borreo grew fruits and vegetables there in the 1870s. The property, which was a larger tract in those days, then changed ownership twice for as much as \$10,000. In 1895 Julia Gift “gifted” the property, according to the deed, to a San Francisco woman named Orpah Fulton “for love and affection.”

As the world entered the twentieth century, this is where a seafarer by the name of Pleasant Ashley Stevens planted vines in 1905. It remains the oldest vineyard in the Coombsville sub-AVA. Most of those vines still exist today due to the dedicated farming and wisdom of Bill Moore, a retired orthodontist, who purchased the property as his first home in the 1980s. Over the ensuing years, Bill Moore has lovingly preserved and restored the vineyard. His interest in hands-on farming and keeping history alive is in perfect alignment with our mission and we look forward to producing many memorable wines from this historic site together.

This vineyard is especially important to the wine industry now as its genetic heritage is being carefully preserved and propagated through the U.C. Davis Heritage Vineyard project. In other words, the genetic material from these historic vines is being saved for future generations of winemakers. In the meantime, we get to enjoy the immense pleasures that this Zinfandel brings.

*R.W. Moore Vineyard*



## OUR WINES

### STAGECOACH VINEYARD<sup>®</sup>, NAPA VALLEY

We are uniquely proud of our project at Stagecoach Vineyard<sup>®</sup> which we have boldly called “the most serious planting of Zinfandel in Napa Valley’s modern era.” Stagecoach Vineyard<sup>®</sup> in its entirety is no ordinary vineyard location—it is more like its own district in and around Atlas Peak, Pritchard Hill, and Oakville. It encompasses hundreds of acres of prime mountain vineyards that supply dozens of winemakers with some of their most prized grapes. Original owner Jan Krupp cleared literally mountains of the reddish-brown rock to allow for planted vines. The modern influences are labor-saving with sun-catching wire trellises and a water conservation-based drip irrigation system.



California’s penurious first farmers would have loved to have been able to afford such luxuries. Gallo took ownership of the vineyard in 2017 and Biale is able to continue to produce an impressive wine from the single block of Zinfandel planted in this vineyard.





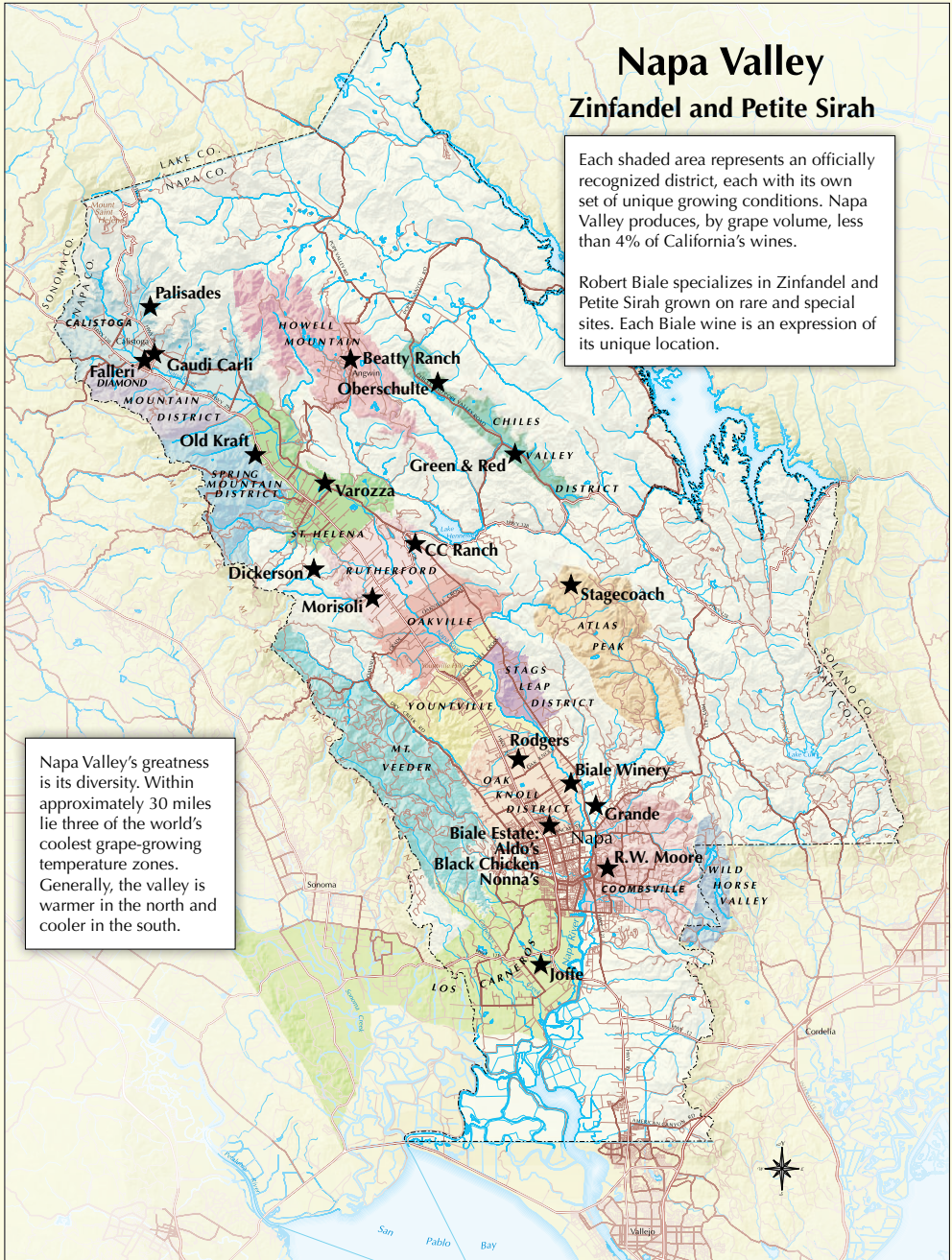
# Napa Valley

## Zinfandel and Petite Sirah

Each shaded area represents an officially recognized district, each with its own set of unique growing conditions. Napa Valley produces, by grape volume, less than 4% of California's wines.

Robert Biale specializes in Zinfandel and Petite Sirah grown on rare and special sites. Each Biale wine is an expression of its unique location.

Napa Valley's greatness is its diversity. Within approximately 30 miles lie three of the world's coolest grape-growing temperature zones. Generally, the valley is warmer in the north and cooler in the south.







ALDO BIALE  
NAPA CALIF

ALDO  
NAPA



— ROBERT —  
**BIALE**  
VINEYARDS

4038 Big Ranch Road, Napa, California | 707.257.7555 | [www.biale.com](http://www.biale.com)